



Compliance Evaluator

Compliance Assessment at a Glance

Imagine that each morning, when you reach the office, a customized compliance information sheet awaits you. With all this information available, you can easily ask your IT Manager to explain particular issues (rather than periodically having the IT manager manually check compliance status).

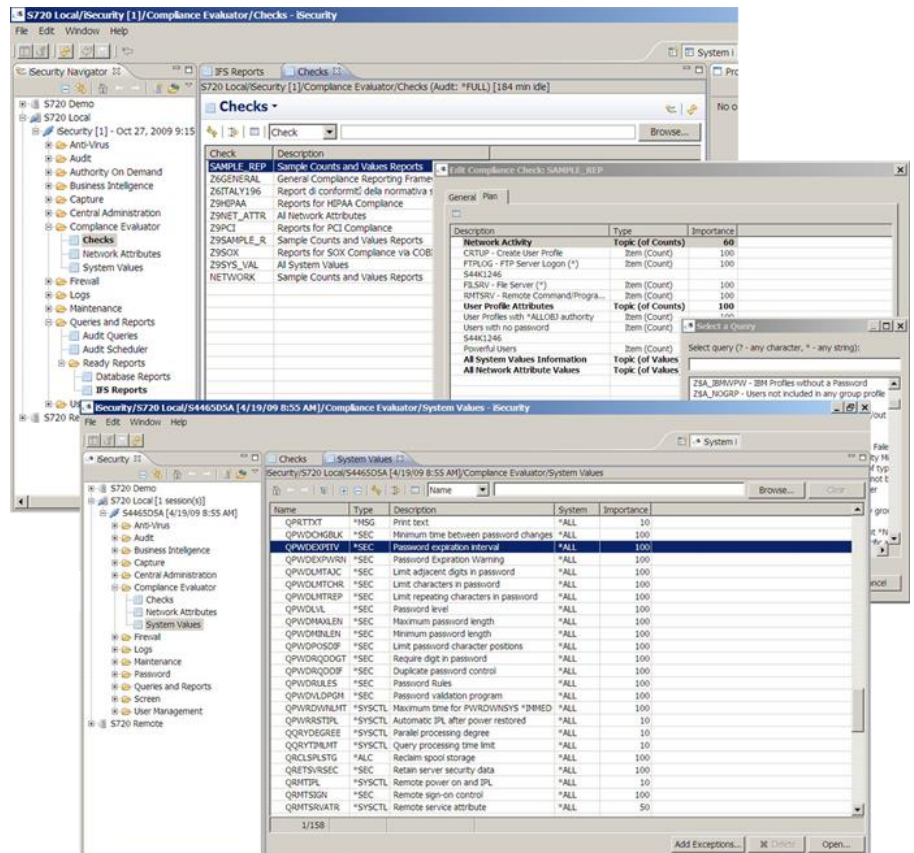
iSecurity Compliance Evaluator offers managers, auditors and administrators a quick yet comprehensive view, analyzing the compliance of their Power i systems with PCI, SOX, HIPAA and other regulations.

With Compliance Evaluator, managers can easily produce any number of compliance checklists, choose the contents and structure of the result, and attach different weights to each item. Compliance Evaluator can be scheduled to run automatically, and its results can be emailed directly from Power i to the relevant person.

Monday, October 26, 2009				Report Filter: T..... Summary (NonBlanks) Exceptions			T..... Summary (NonBlanks) Exceptions		
iSecurity Compliance Evaluator									
Sample PCI Compliance Report									
				System: S720		SPROD			
				Compliance Rating: 65%		89%			
Item	Topic	Name	Relative Importance	Current Value	Optimal Value	Rank for Topic	Current Value	Optimal Value	Rank for Topic
User Profile Attributes			44%			40%			94%
User Profiles with *ALLOBJ authority				7	0-5		5	0-5	
Users with no password				4	0-10		2	0-10	
Powerful Users				12	0-10		12	0-10	
All System Values Information			35%			68%			73%
Previous end of system indicator *SYSCTL QABNDPMSW				0	1		0	1	
Allow object restore option *SEC QALWOBURST				*ALL	*ALL		*ALL	*ALL	
Require digit in password *SEC QPWRDQDDGT				0	1		1	1	
Minimum Password Length *SEC QPWRDMINLEN				5	6-128		0	6-128	
Network Activity			21%			88%			83%
FTP Requests to Production Libraries				4	0-4		2	0-3	
FTPLDG - FTP Server Loadon (*)				12	0-10		4	0-5	
FILSRV - File Server (*)				2	0-10		4	0-3	
Native Access to Production Libraries				2	0-5		2	0-3	

Features

- Network-wide compliance status at a glance
- Built-in compliance checks for PCI, SOX, HIPAA etc.
- Easily defined site-specific compliance checks
- Color-coded Excel spreadsheet can be emailed directly from Power i
- Scheduling of periodic compliance checks
- Single score per system and specific scores per topic
- Each item & topic allocated individual importance
- All scores displayed as percentages
- Several report templates, with different levels of detail
- Unlimited number of reports
- Detailed and/or summary data
- User-friendly GUI



Compliance Evaluator Reports

Compliance Evaluator reports provide an overall compliance score, as well as specific ratings for topics comprising the compliance standard being evaluated. Individual topic scores are based upon the relative importance of the items comprising the topic and, of course, the item values. Status checks are provided for items such as System Values, Network Attributes, User Profile Attributes and Object Authorities.

The result is a colorful, user-friendly Excel spreadsheet which provides three different views: general, summary and exception-only displays.

Compliance Evaluator reports are based upon both static system data and time-sensitive data covering actual network transactions. Together, these can highlight unexpected changes in user activity, such as how often users access production or system files. The reports include operational information from QAUDJRN and from actual network activity. Virtually any type of information can be included.

A number of pre-defined compliance checks relating to PCI, SOX, HIPAA and other common security regulations are supplied with the product. Each report can relate to a single server, selected servers or all servers in the enterprise. In addition, Site-specific compliance checks can be defined by users through an advanced Eclipse-based GUI.

The results of queries are automatically saved, and can serve as the basis for historical comparisons of compliance status over time.